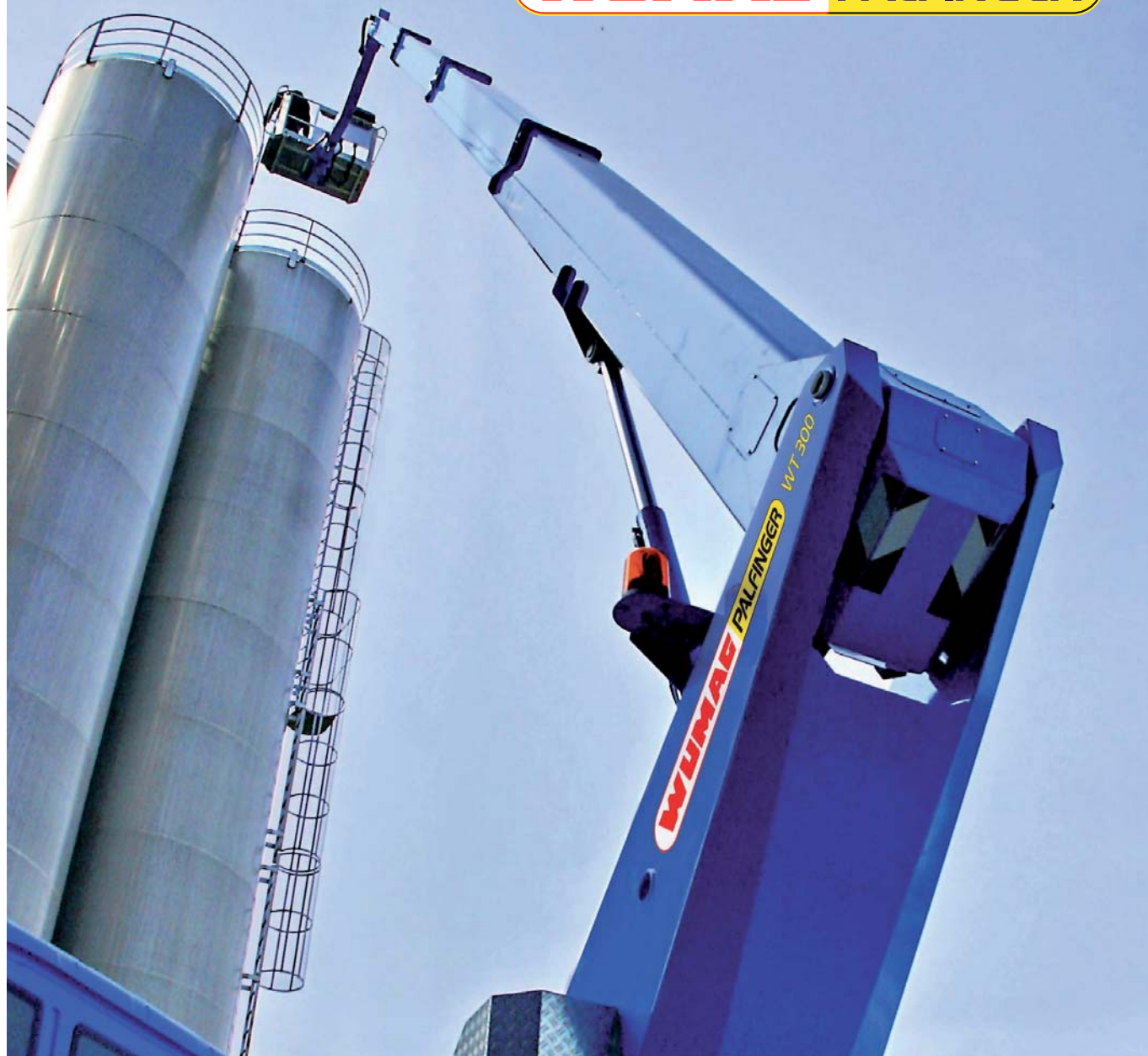


WT 300

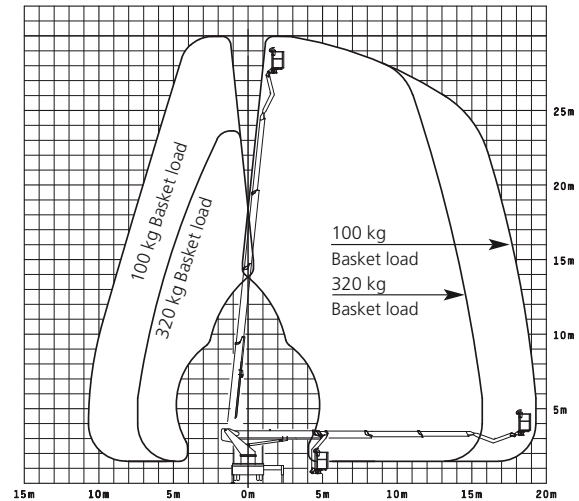
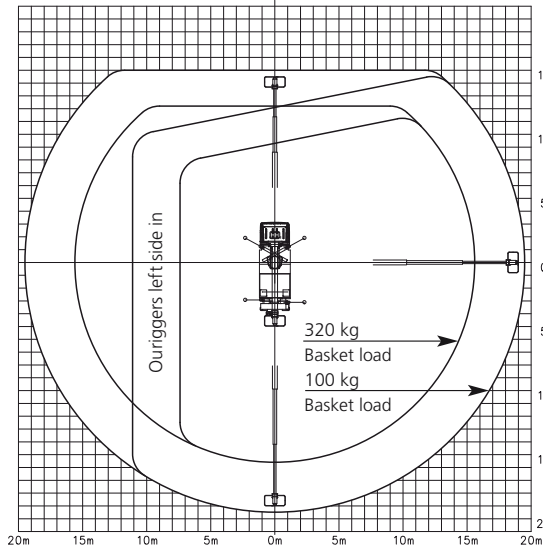
WUMAG PALFINGER



The best in its class

Tailored client solutions

WT 300 Working range



Technical Data

Specifications of basic model

Max. working height	30 m
Max. basket floor height	28 m
Max. horizontal outreach / with workman basket	19.50 m / 100 kg

Workman basket

Dimensions of the standard workman basket (B x L x H)	1.60 x 0.80 x 1.10 m
Slewing range of basket	2 x 80°
Max. permissible load	320 kg
Motor Engine Start/Stop in the workman basket	standard
Synthetic cover on control panel	standard
230 V CEE outlet in the workman basket	standard
Anchor points to secure safety belt	standard
Electronical controlled proportional remote control	standard
Graphic display	standard
Collision protection for basket and jib boom	standard
24 V socket in the workman basket	standard
Basket interchange system	standard
Overload control in the workman basket	standard

Boom system

Number of extensions	3
Self centering system	standard
All power guides and hydraulic and mechanical equipment internally routed and optimally protected against damage	standard
Hydraulic jib boom, working range	195°
Automatic transport locking device for jib boom	standard
Automatic return of main boom to transport position "Home Function"	standard

Slewing system

Slewing within mirror width	standard
Slewing range	540°

Comprehensive service

KP-ATE300M1-E
E 09/08, K 09/08, D 04/09

Stabilizers

Function of the stabilizers	partial variable, H-type
Min. stabilizer spread – all outriggers in	2.50 m
Max. stabilizer spread – both sides horizontally extended	5 m
Stabilizer control from the workman basket	standard
Max. permissible inclination 2°	standard
4 Safety plates	standard
Half automatic stabilizing	standard
Permanent ground pressure control	standard

Carrier vehicle and installation

GVW class	7.49 t
Length in transport position	8.65 m*
Width in transport position	2.50 m*
Height in transport position	3.50 m*
Angle of slope	approx. 9° *
Hydraulic oil tank with return line filter	standard

*) depending on carrier vehicle

Manual and emergency controls

Integrated in the body – well-protected and lockable	standard
Emergency lowering system in the basket	standard
Back-up/Emergency control at the base	standard
Protection for cabin of chassis	standard

